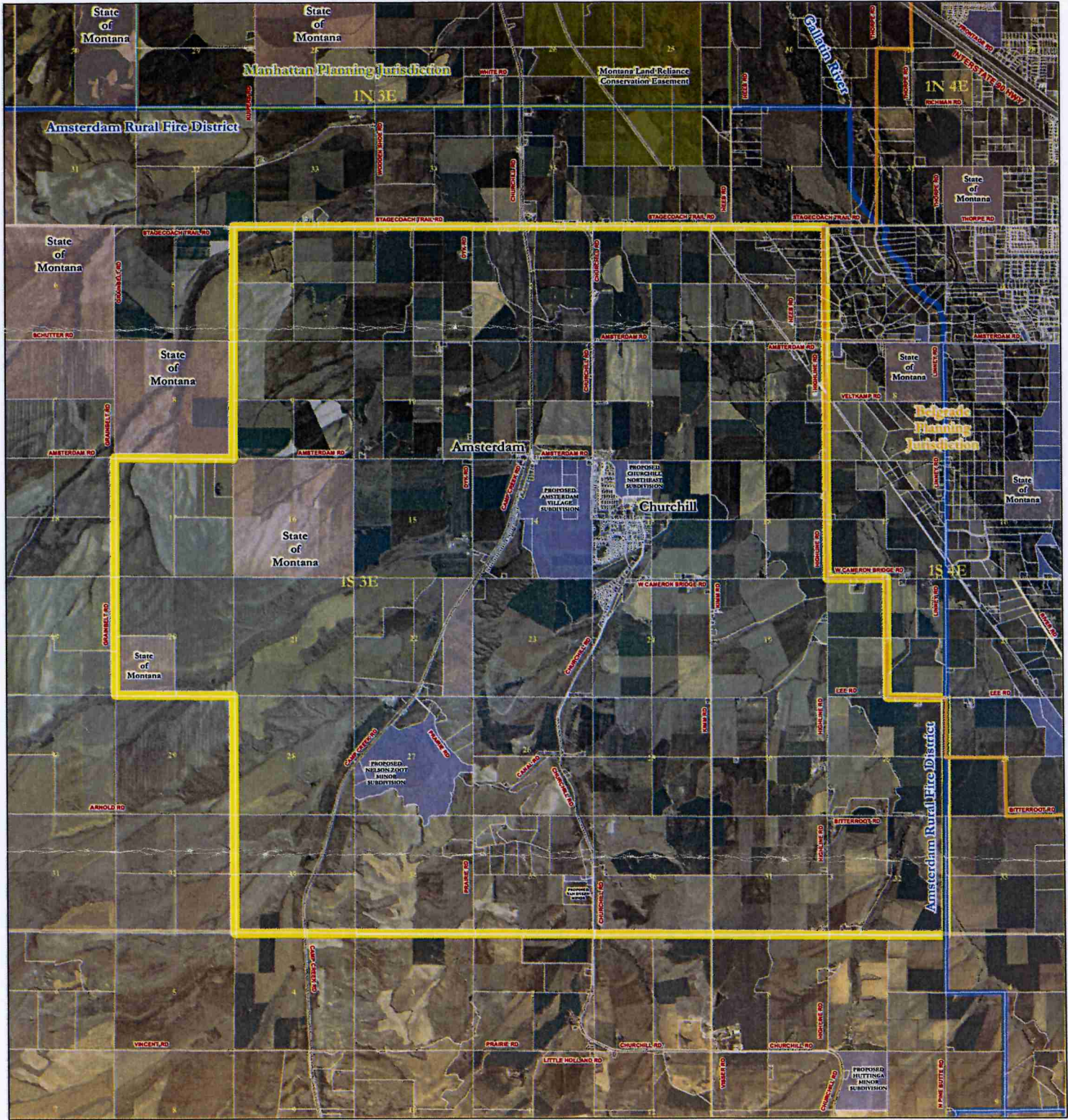


Proposed Amsterdam-Churchill Neighborhood Planning Area

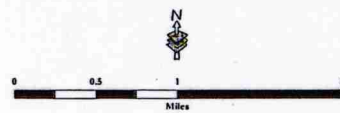
Gallatin County, MT

DRAFT
10/25/2007



NOTE: This map is a visual representation only and does not represent a survey. No liability is assumed as to the accuracy of the data delineated hereon. Aerial imagery from 2005 National Agriculture Imagery Program.

- | | | | |
|--|---|--|--|
| | Parcels | | State Lands |
| | Incorporated Cities and Towns | | Federal Lands |
| | Amsterdam Rural Fire District | | Conservation Easements |
| | Belgrade Jurisdictional Boundary | | Open Space and Parks |
| | Manhattan Jurisdictional Boundary | | Proposed Subdivisions Currently Pending Review |
| | Proposed Amsterdam Churchill Neighborhood Planning Boundary | | |



MAP PREPARED BY
GALLATIN COUNTY, MT
GIS DEPARTMENT AND
PLANNING DEPARTMENT

bw_20071025_amsterdam_churchill_area_2005_NAIP.mxd